

GREEN CAY VILLAGE

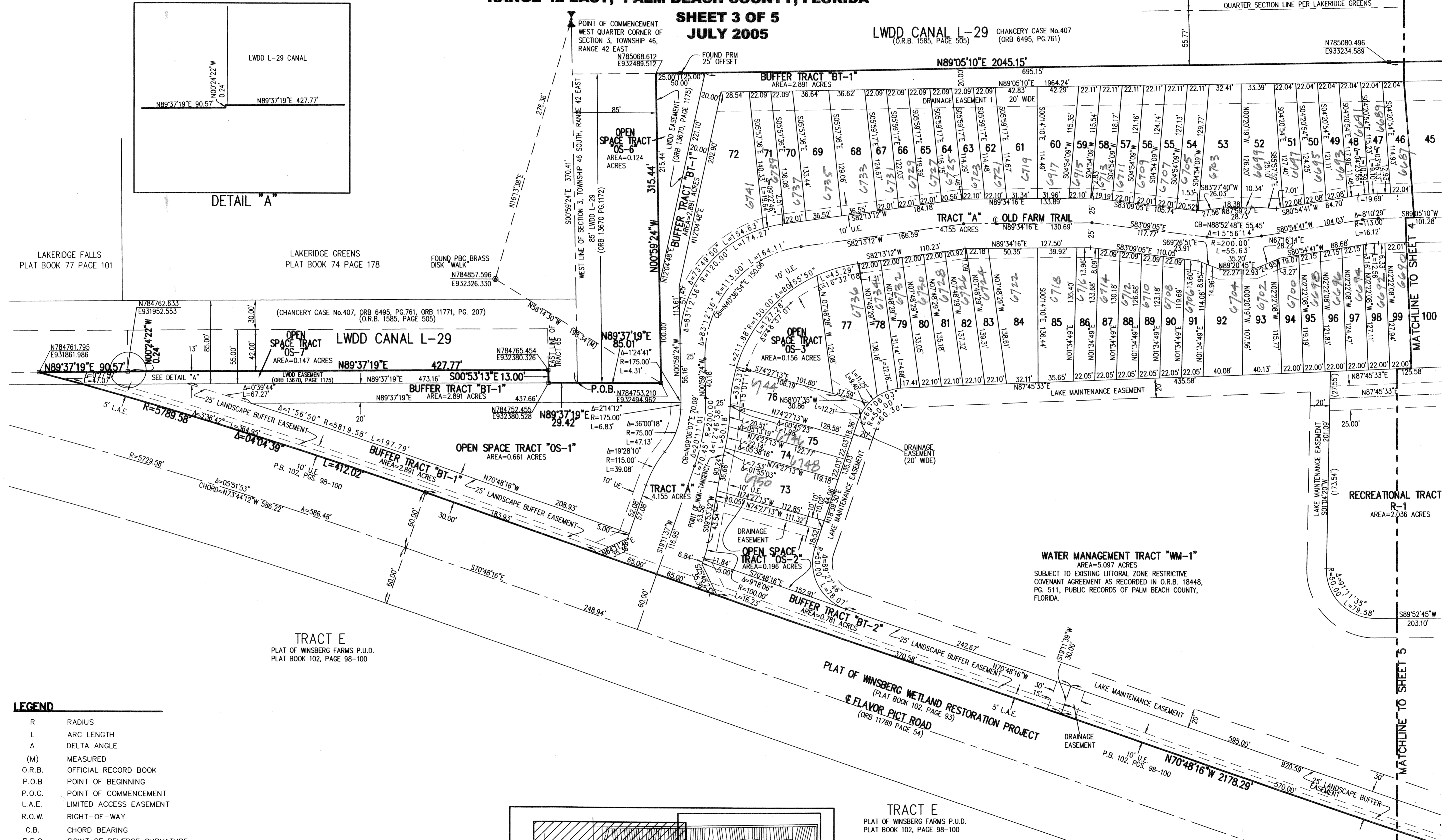
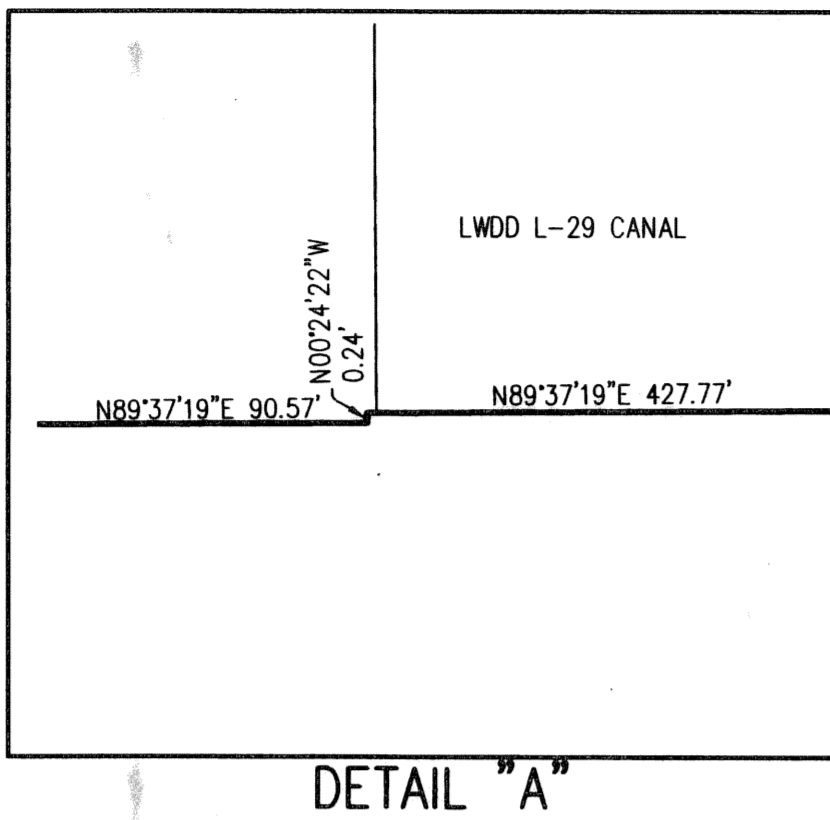
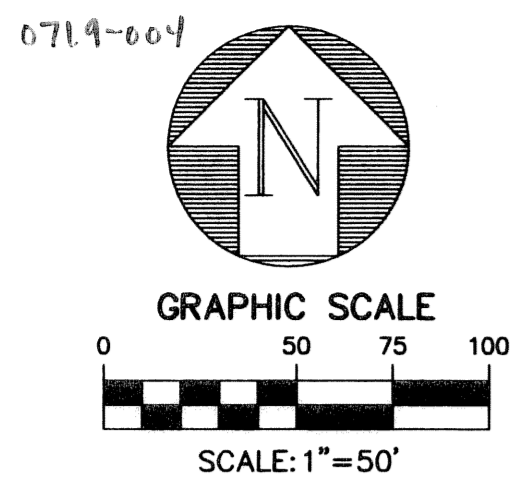
BEING A REPLAT OF A PORTION OF WINSBERG FARMS P.U.D. AS RECORDED IN PLAT BOOK 102, PAGES 98-100 OF THE PUBLIC RECORDS OF PALM BEACH COUNTY AND LYING IN SECTIONS 3 AND 4, TOWNSHIP 46 SOUTH, RANGE 42 EAST, PALM BEACH COUNTY, FLORIDA

SHEET 3 OF 5
JULY 2005

LWDD CANAL L-29 CHANCERY CASE No.407 (O.R.B. 1585, PAGE 505) (ORB 6495, PG.761)

LAKERIDGE GREENS PLAT BOOK 74 PAGE 178

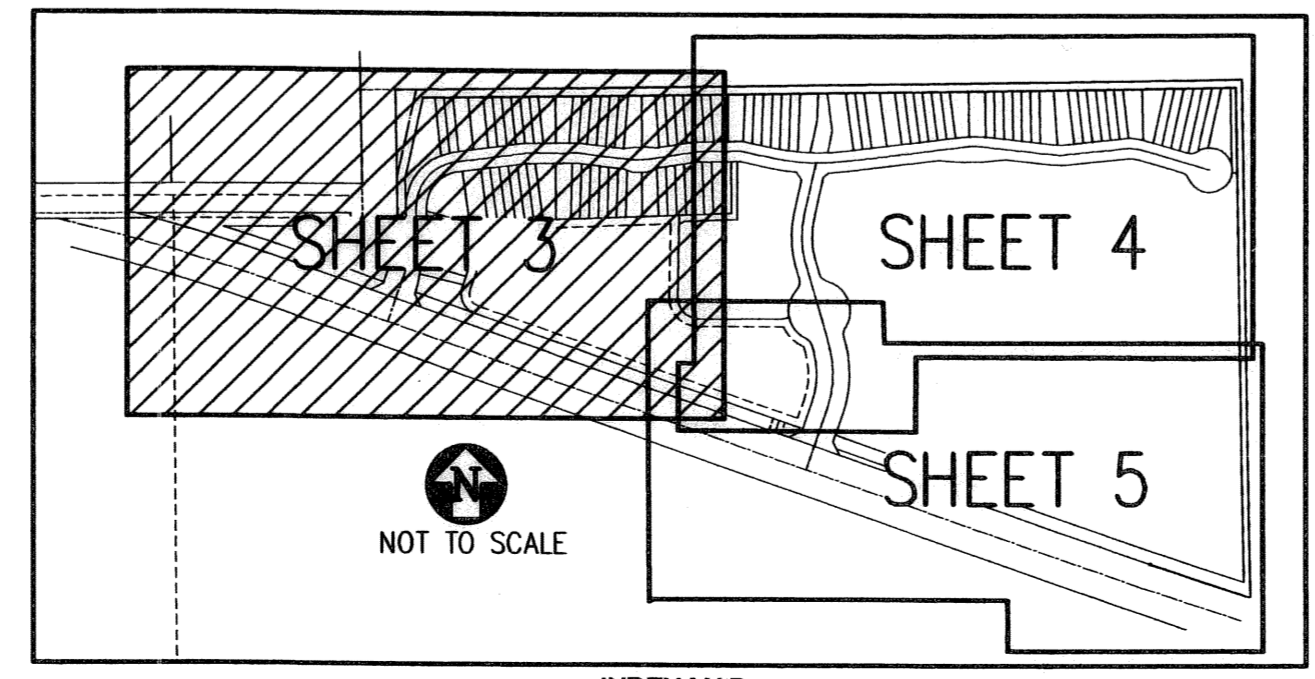
SOUTH BOUNDARY OF LAKERIDGE GREENS N89°05'10"E
QUARTER SECTION LINE PER LAKERIDGE GREENS



TRACT E
PLAT OF WINSBERG FARMS P.U.D.
PLAT BOOK 102, PAGE 98-100

WATER MANAGEMENT TRACT "WM-1"
AREA=5.097 ACRES
SUBJECT TO EXISTING LITTORAL ZONE RESTRICTIVE COVENANT AGREEMENT AS RECORDED IN O.R.B. 18448, PG. 511, PUBLIC RECORDS OF PALM BEACH COUNTY, FLORIDA.

- LEGEND**
- R RADIUS
 - L ARC LENGTH
 - Δ DELTA ANGLE
 - (M) MEASURED
 - O.R.B. OFFICIAL RECORD BOOK
 - P.O.B. POINT OF BEGINNING
 - P.O.C. POINT OF COMMENCEMENT
 - L.A.E. LIMITED ACCESS EASEMENT
 - R.O.W. RIGHT-OF-WAY
 - C.B. CHORD BEARING
 - P.R.C. POINT OF REVERSE CURVATURE
 - P.B. PLAT BOOK
 - PG. PAGE
 - U.E. UTILITY EASEMENT
 - D.E. DRAINAGE EASEMENT
 - ⊕ CENTER LINE
 - SET PERMANENT REFERENCE MONUMENT #2633
 - SET PERMANENT CONTROL POINT (P.K. NAIL & DISC #2633)
 - N.R. NON-RADIAL



NOT TO SCALE

INDEX MAP

GREEN CAY VILLAGE

SFRN
Engineers • Surveyors • Mappers
1201 BELVEDERE ROAD, WEST PALM BEACH, FLORIDA 33405
PH (561)655-1151 • FAX (561)832-9390 • WWW.SFRNINC.COM

DATE	07/10/2004	S H E E T	3/5
SCALE	1" = 50'		
CAD FILE	03504PLAT.dwg	JDB NO.	03504.03
SYSK PROJECT	03504		
DRAWN	SFRN STAFF		
CHECKED	G. RAYMAN		

SUBDIVISION GREEN CAY VILLAGE
 BOOK 106 PAGE 122
 FLOOD ZONE B
 QUAD # 30
 SE
 TAZ 904
 PUD NAME WINSBERG FARMS

V:\Lond Projects RE-02504.dwg 03/20/04 11:40 PM ECT